

# Slide seminar

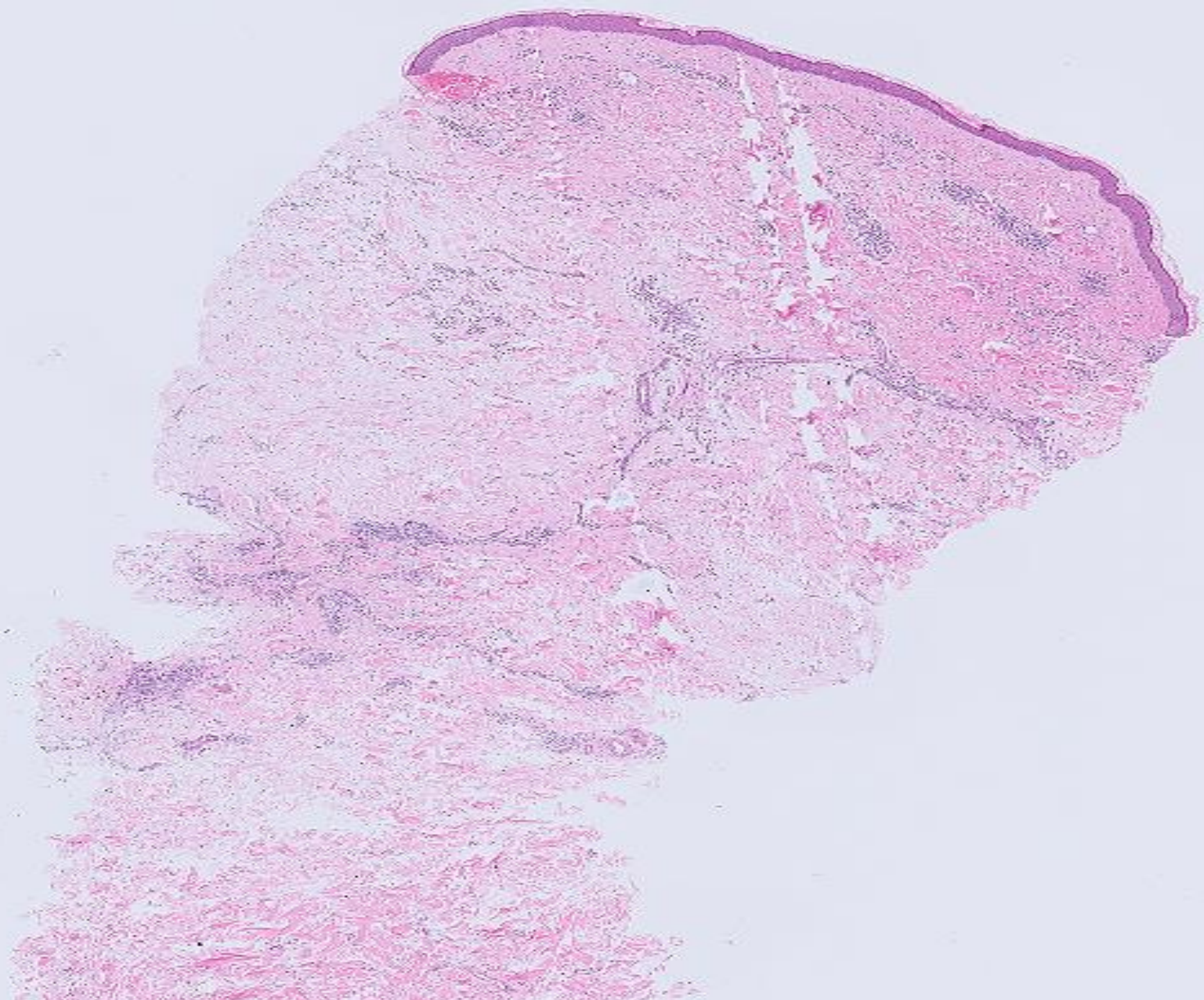
PS9 and 10

Dr Arti Bakshi

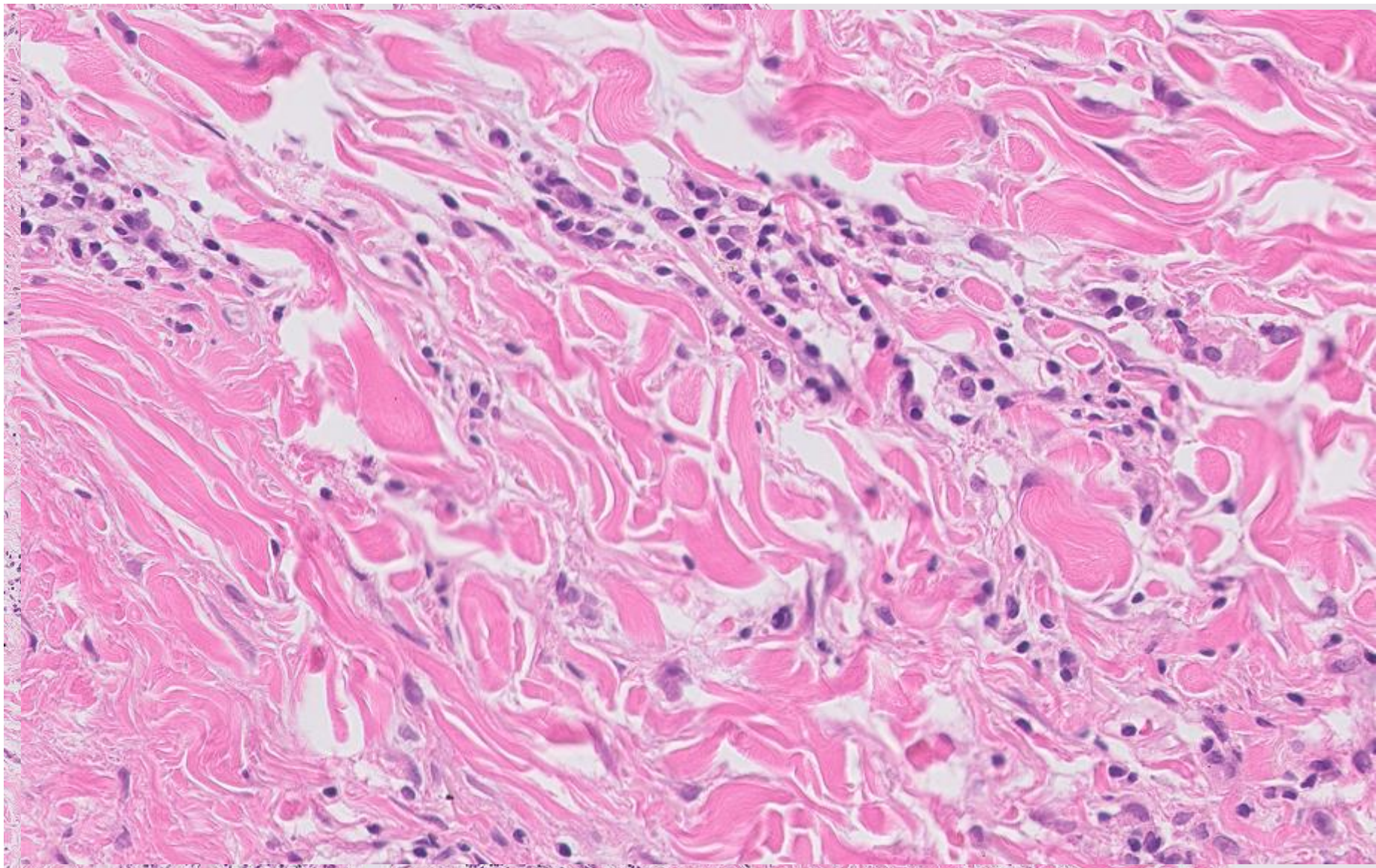
Liverpool Clinical Laboratories

# Case 9

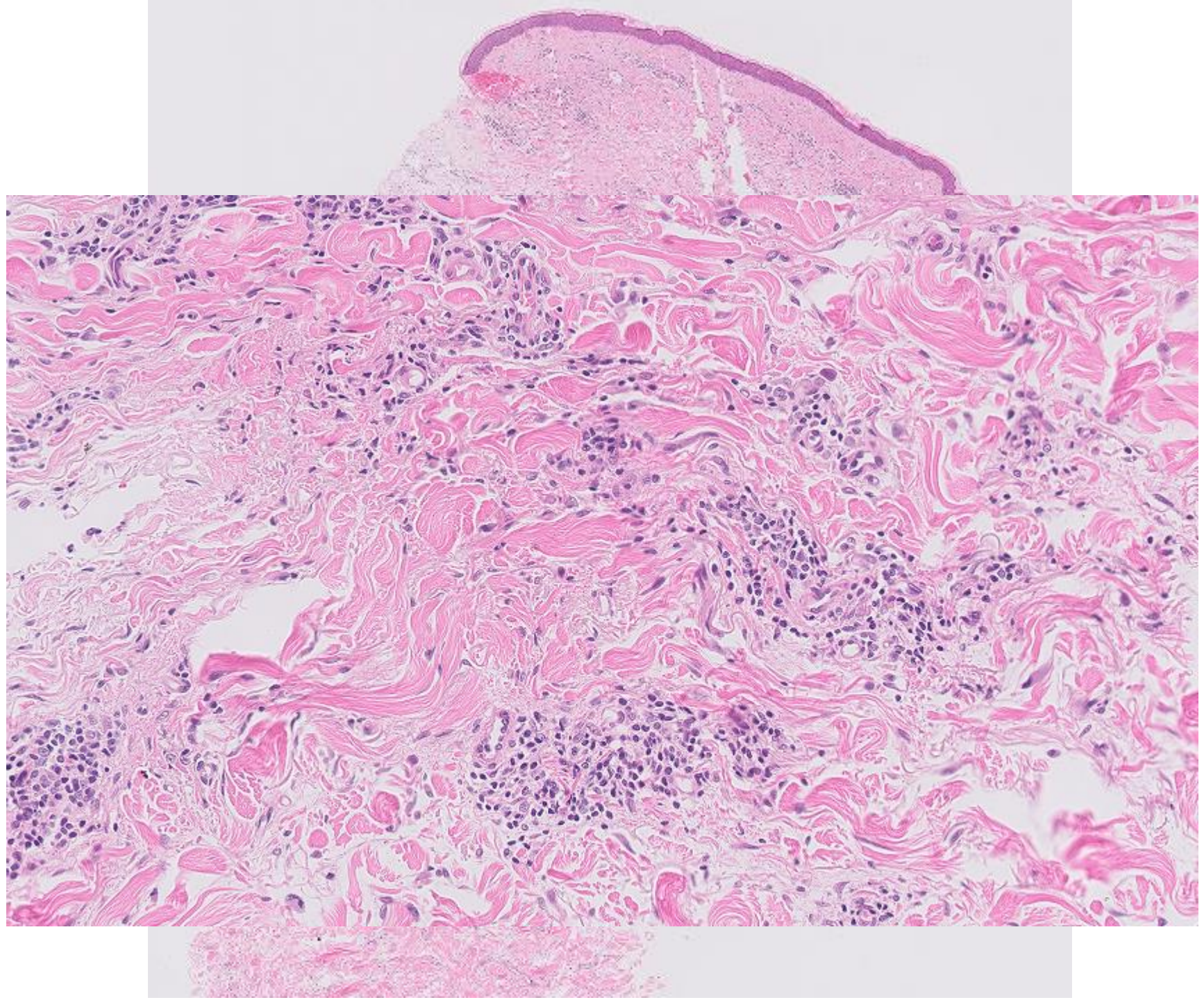
- Inflammatory rash on breast not responding to steroids



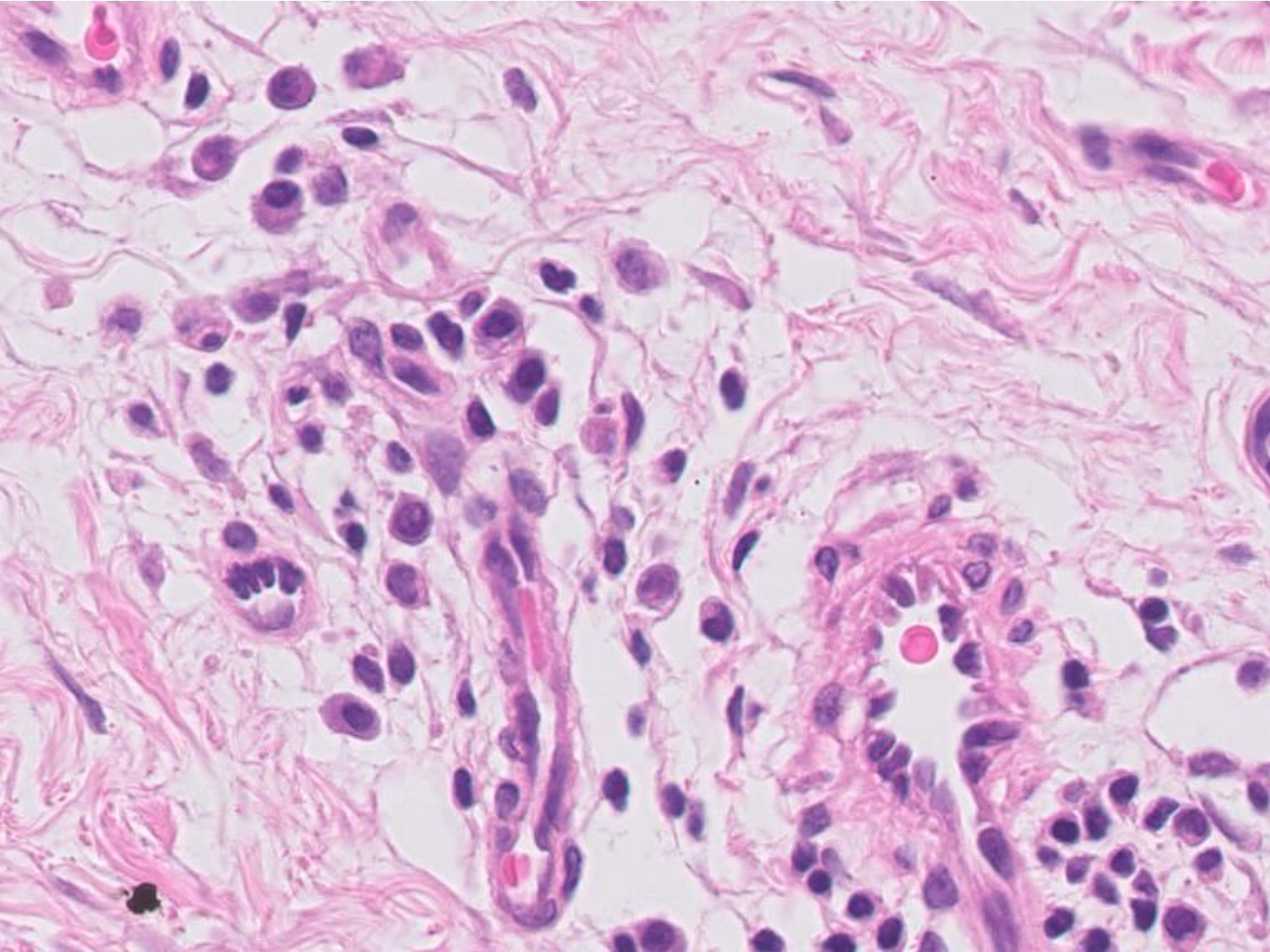








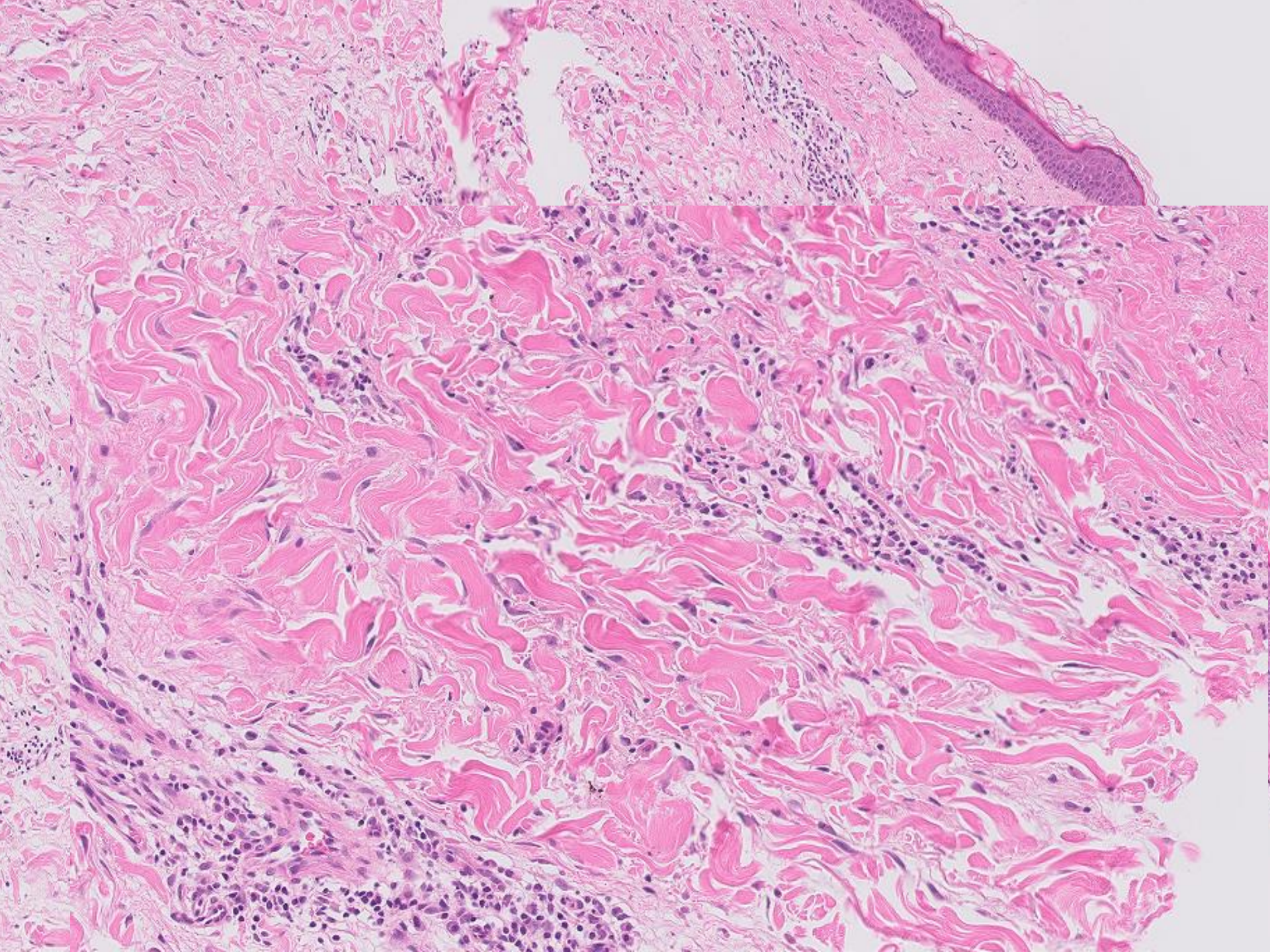




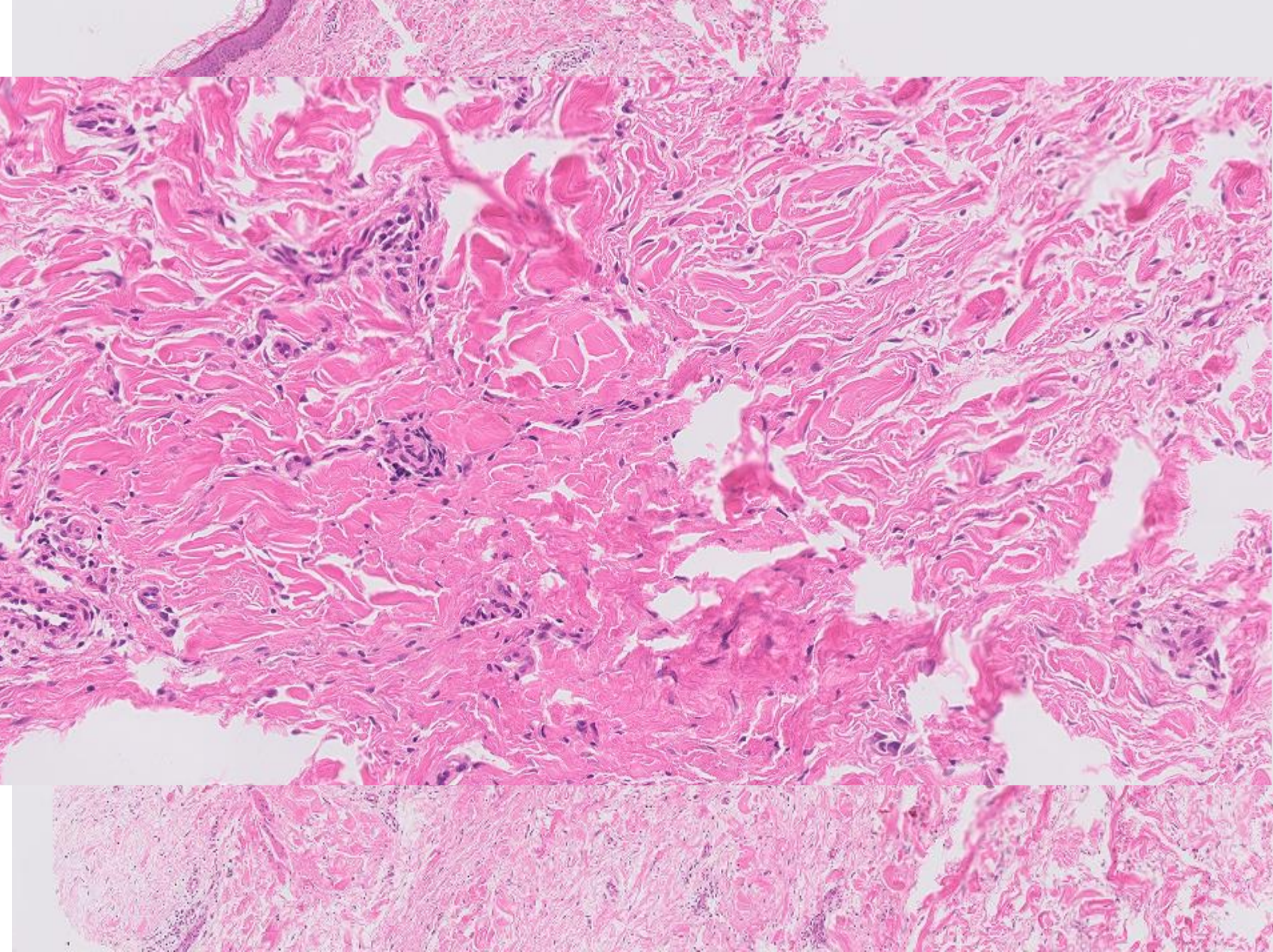
# Inflammatory Reaction pattern

- Superficial and deep perivascular and interstitial lympho-histiocytic inflammation
- D/D- wide
- Keep inflammatory morphoea in mind!











# Diagnosis

- Inflammatory Morphoea



# Morphoea

## 1. Inflammatory stage

Early

Late

## 2. Established sclerotic stage

# Inflammatory Morphoea

Early stage:

- Superficial and deep perivascular, interstitial and perineural lymphohistiocytic infiltrate.
- Plasma cells usually present (perineural plasma cells a good clue, if present)
- Eosinophils may be seen
- Changes in dermal connective tissue subtle
- Intersitital mucin may be seen



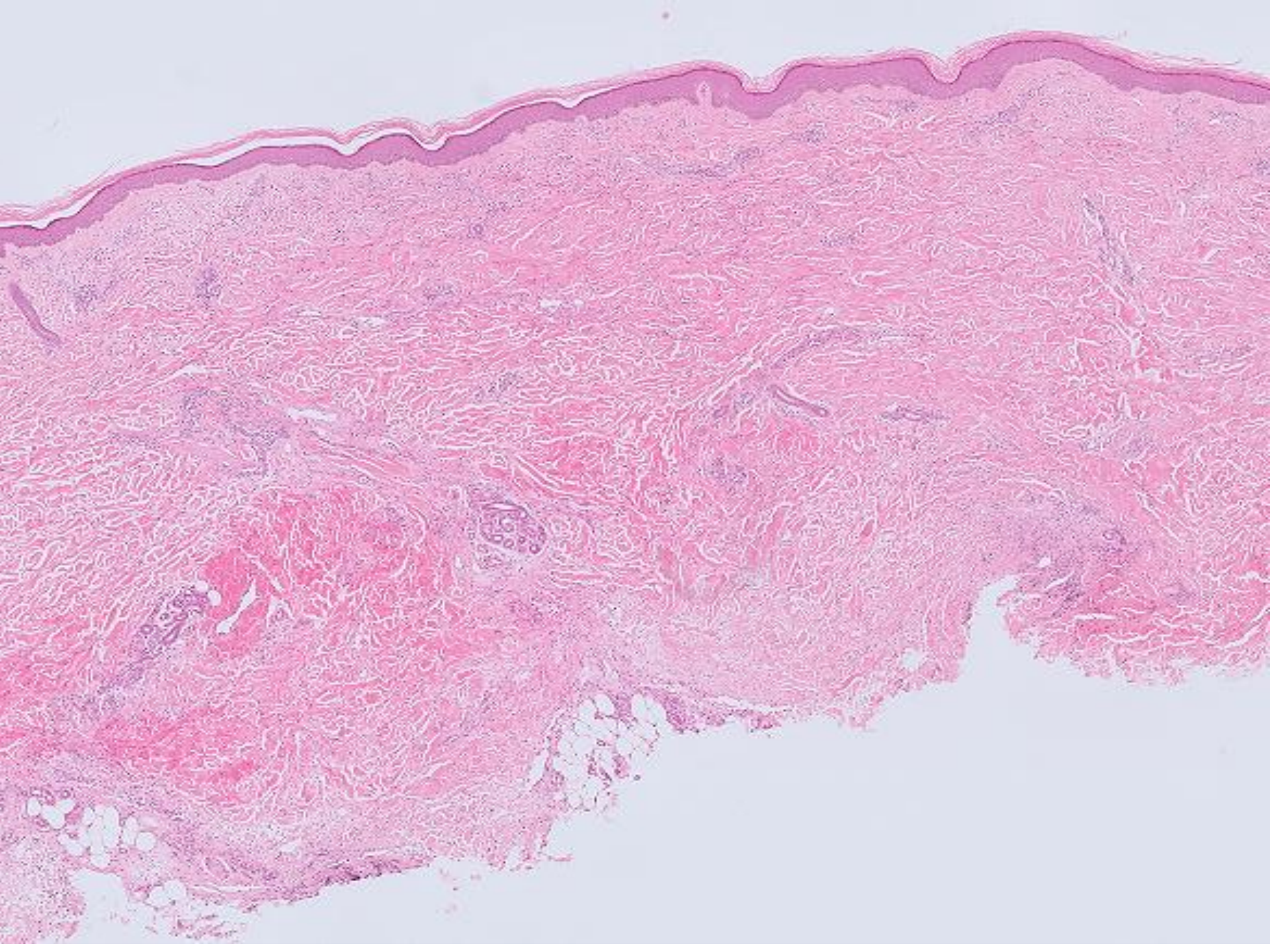
# Inflammatory Morphoea

Late stage:

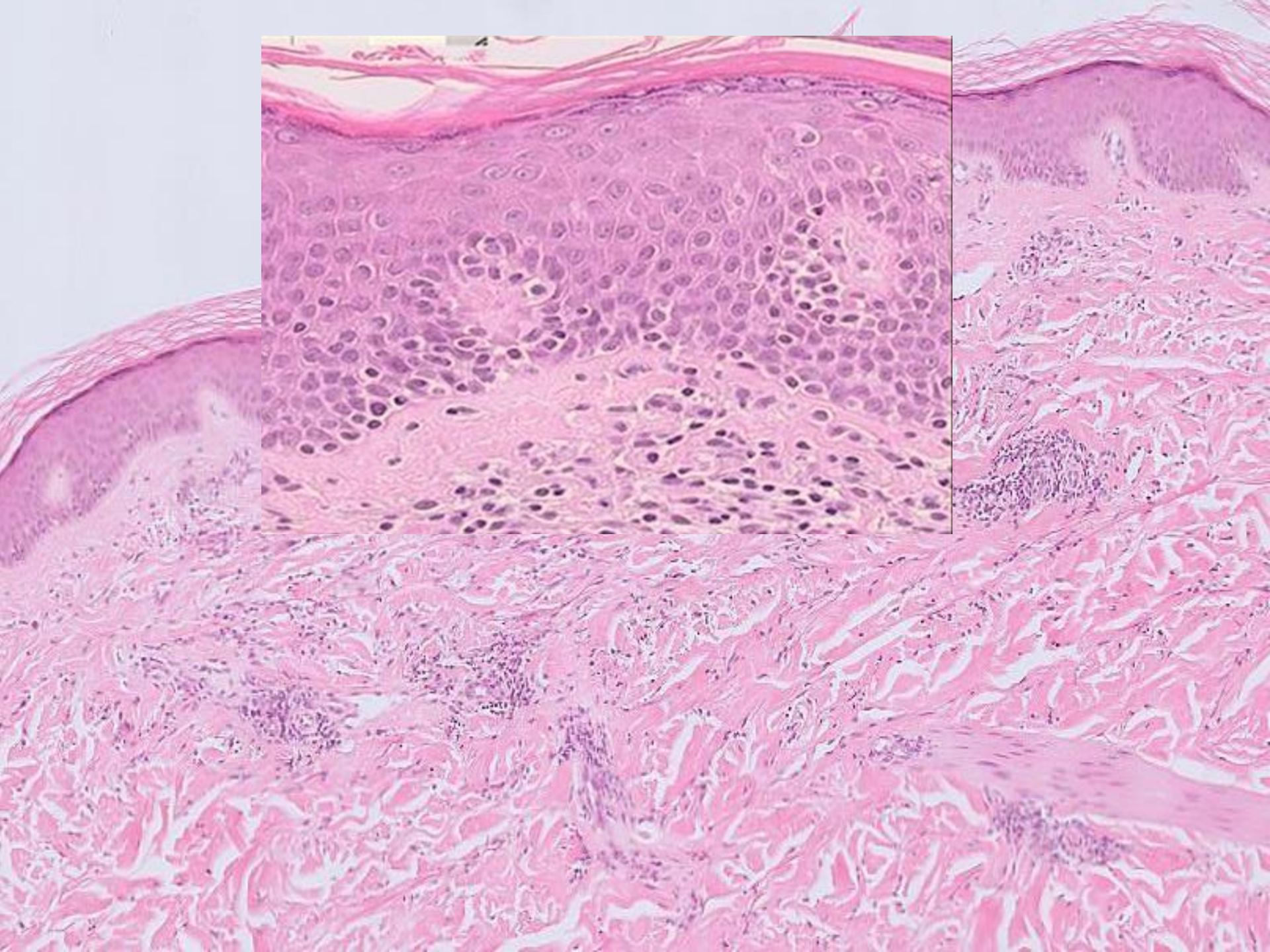
Inflammation starts subsiding and Interstitial pattern of histiocytes becomes prominent

- PS 9: 47/F with extensive rash to arms and legs consisting of erythematous patches and few plaques.

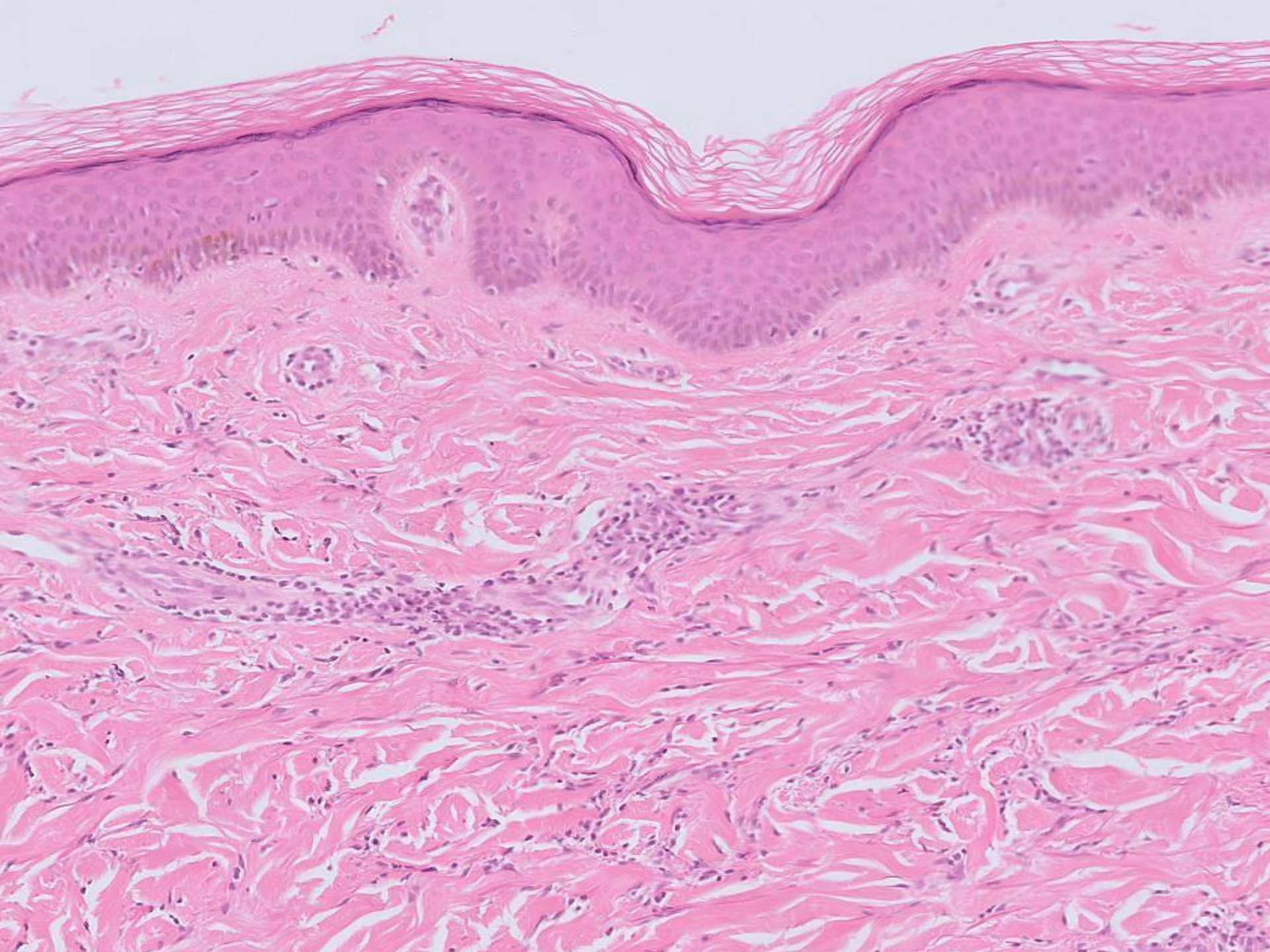




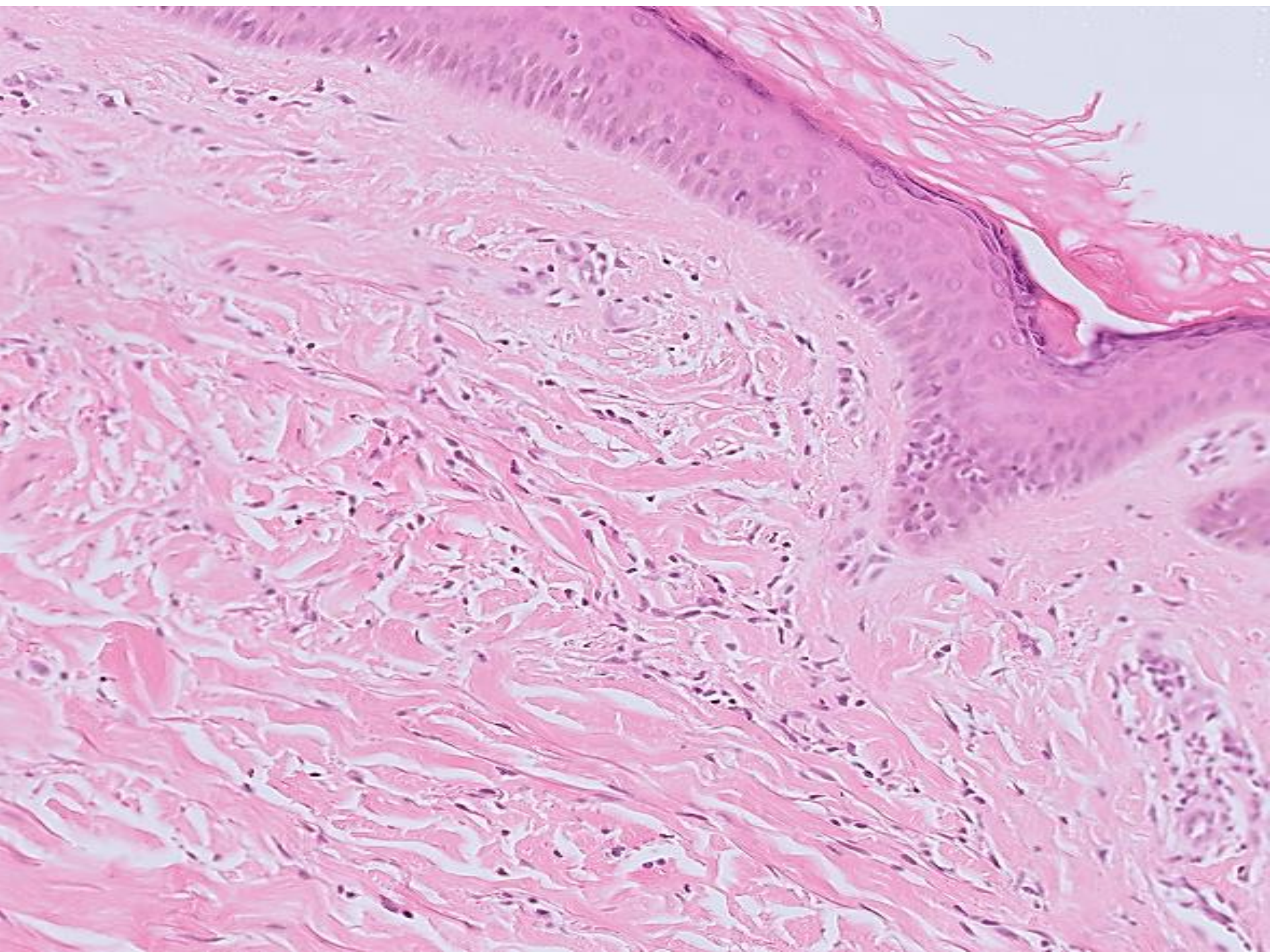




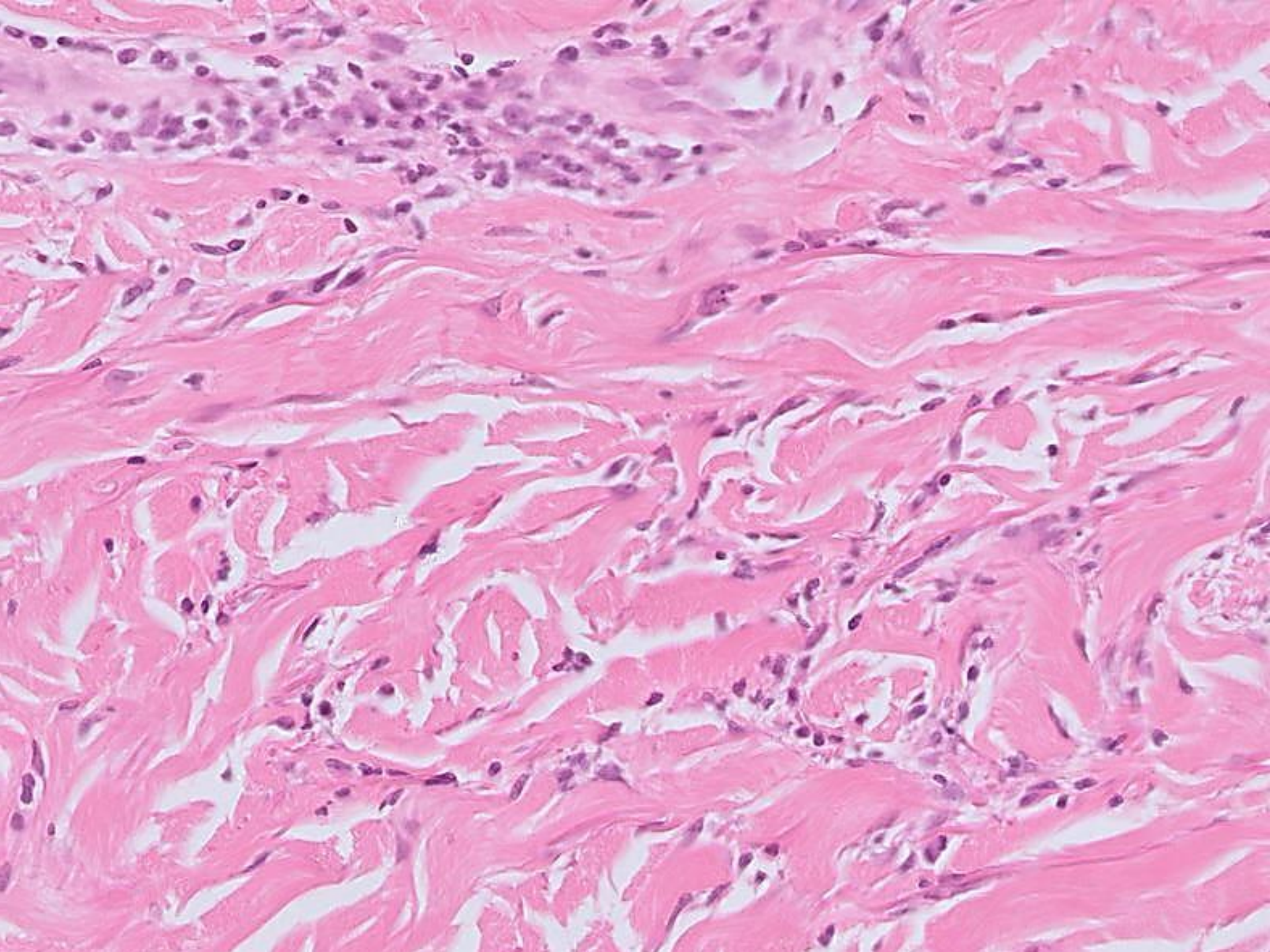




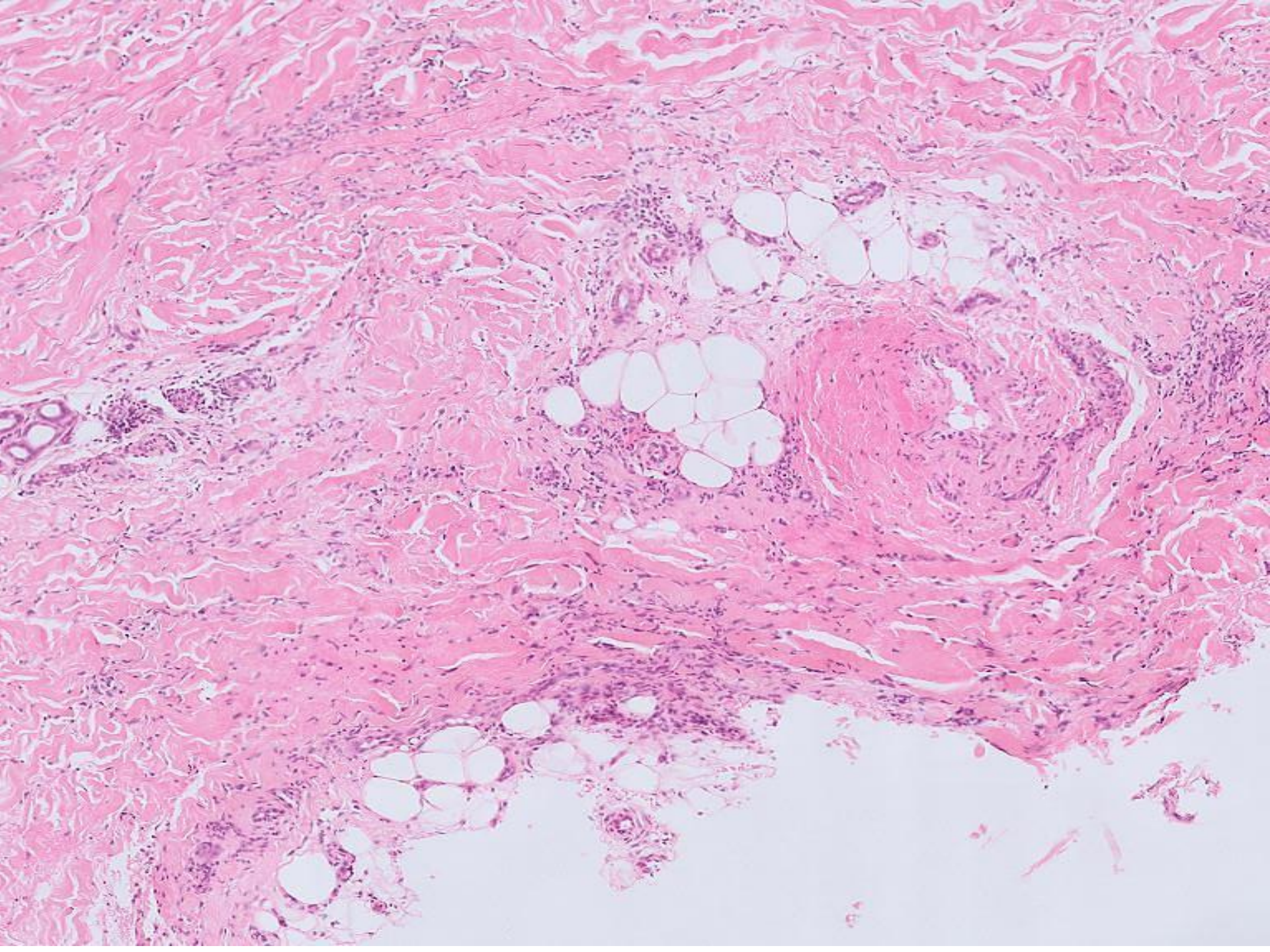






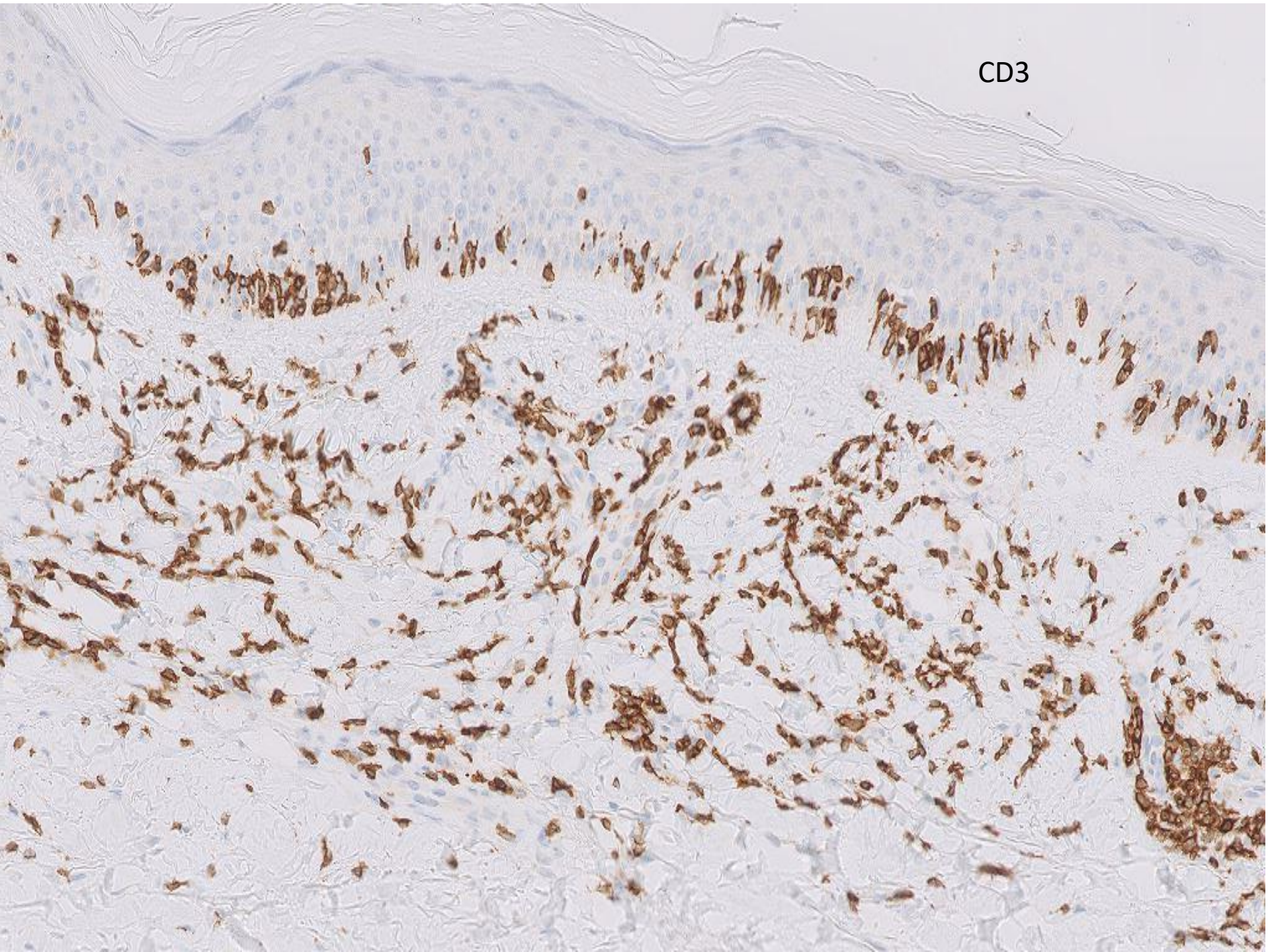




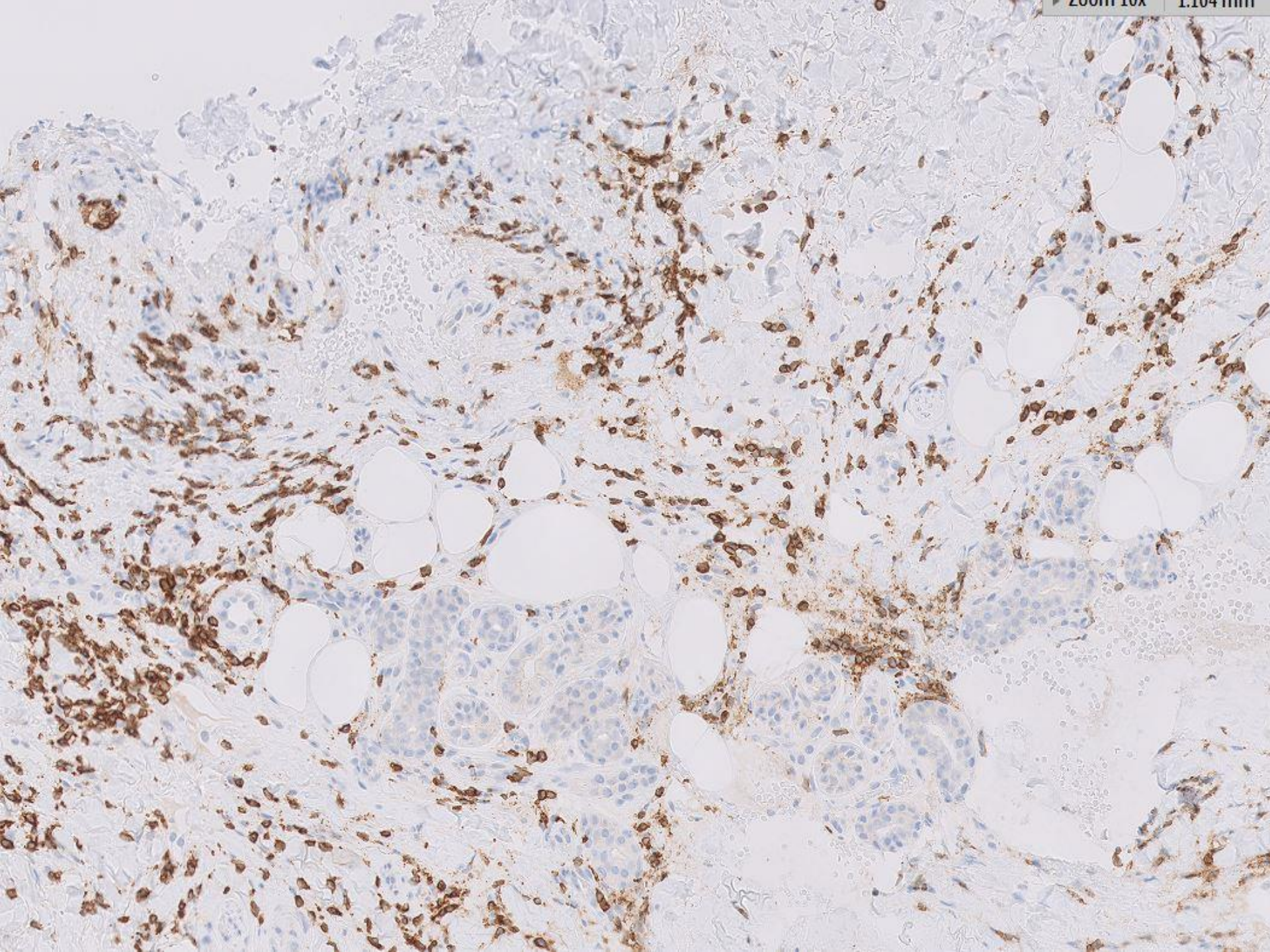




CD3

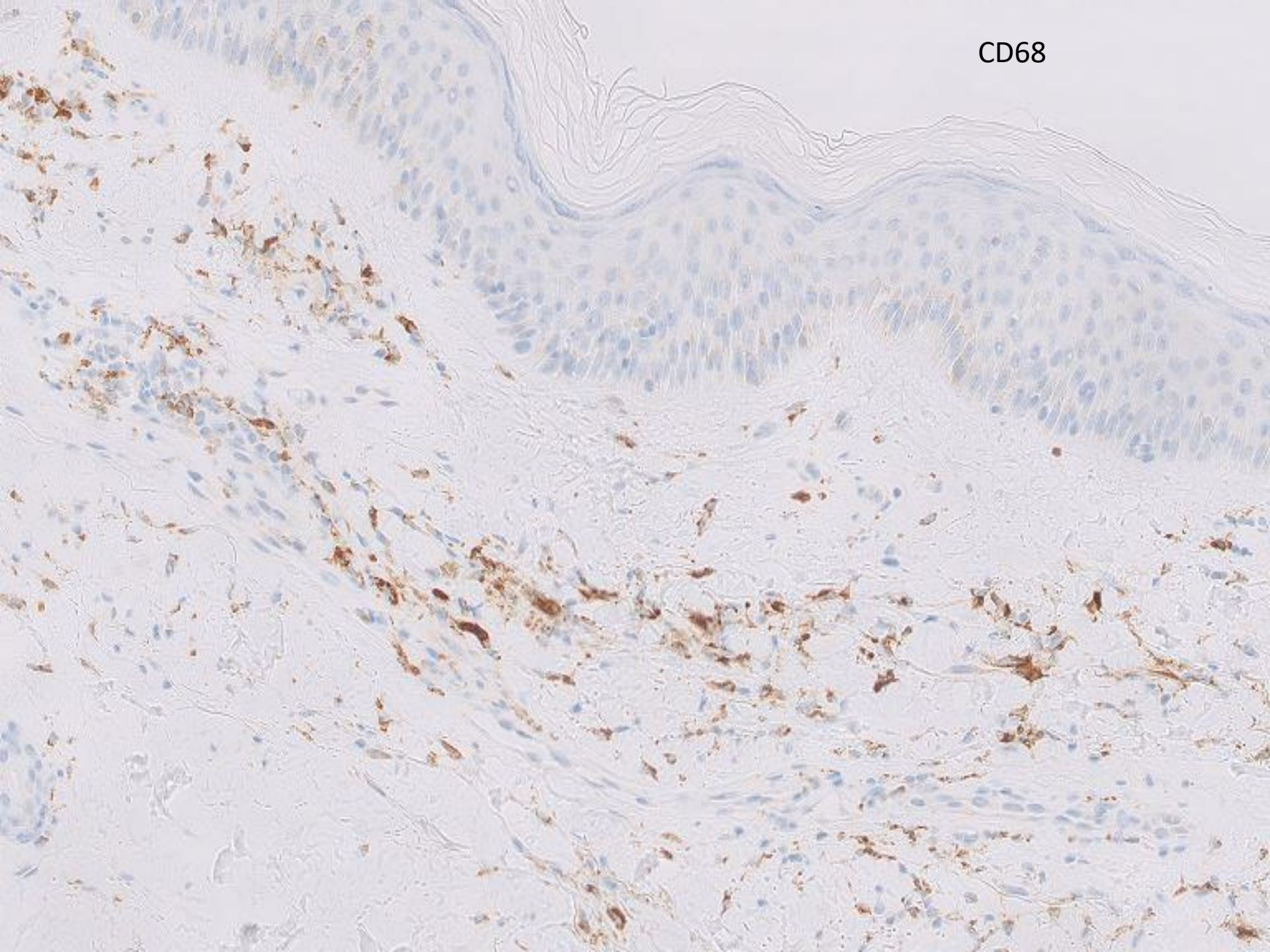








CD68





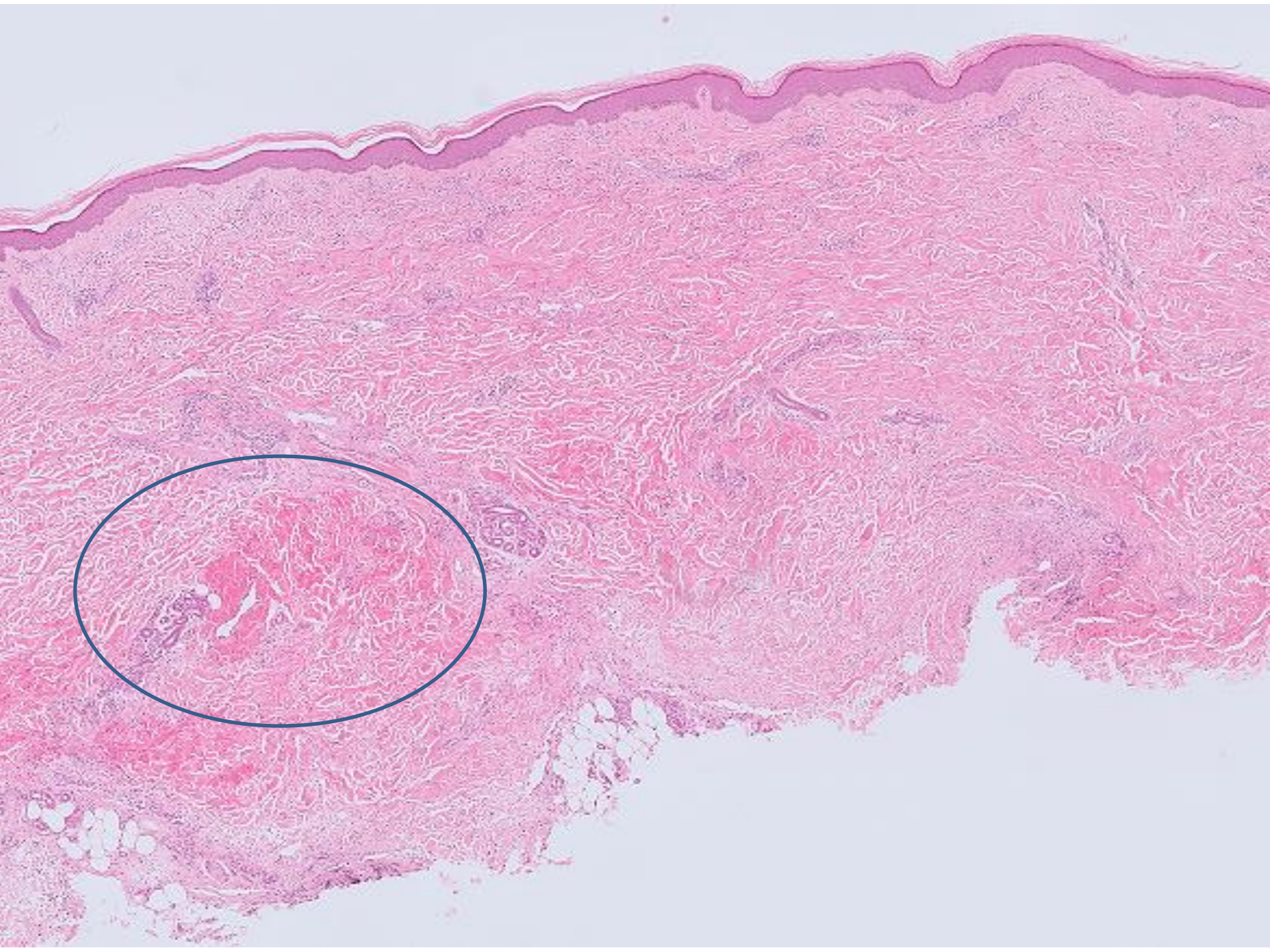
# D/D

- Interstitial Granuloma annulare
- Interstitial Mycosis Fungoides
- Inflammatory Morphea

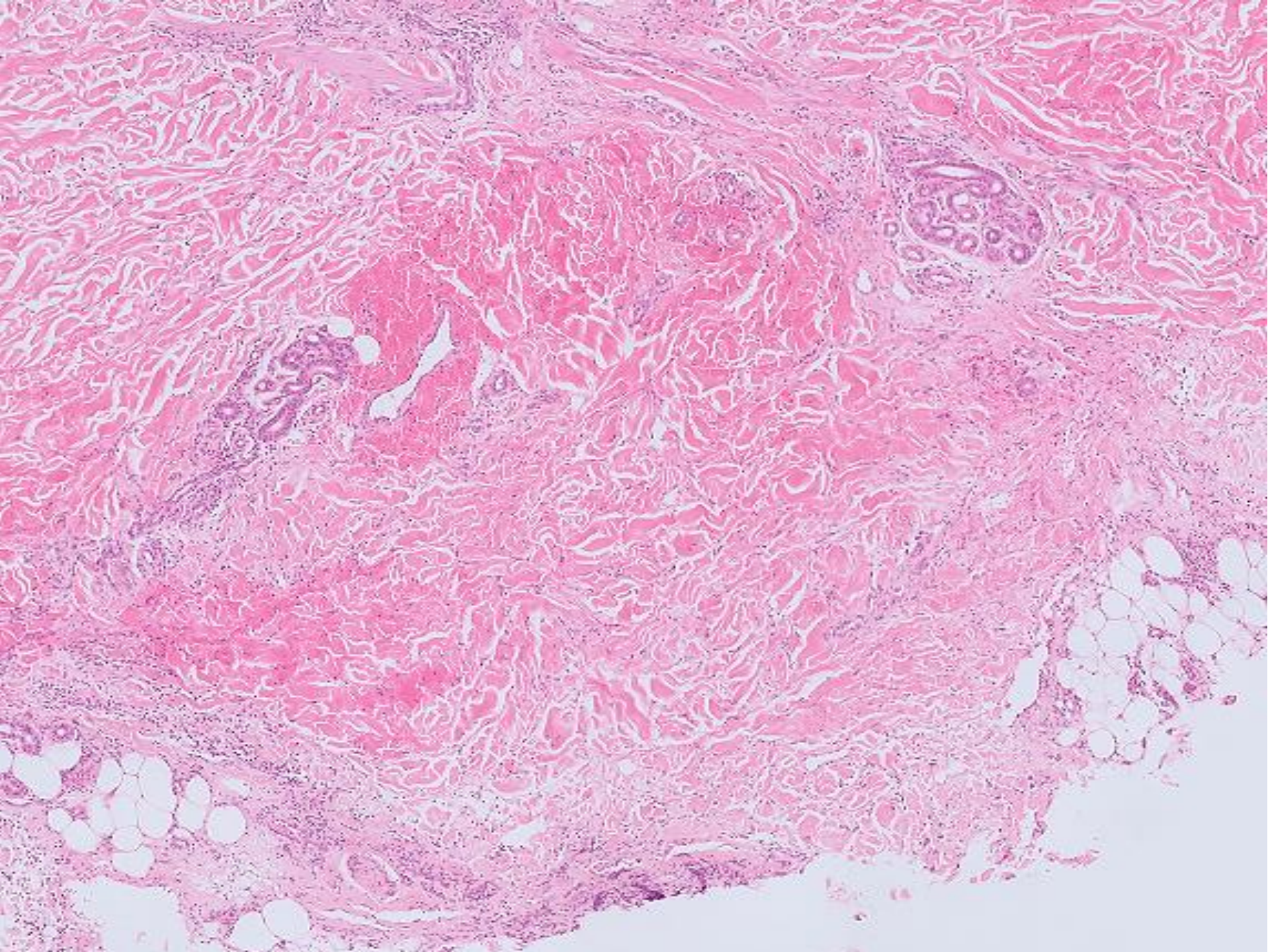
J Cutan Pathol. 2002 Mar;29(3):135-41.

**Interstitial mycosis fungoides, a variant of mycosis fungoides resembling granuloma annulare and inflammatory morphea.**

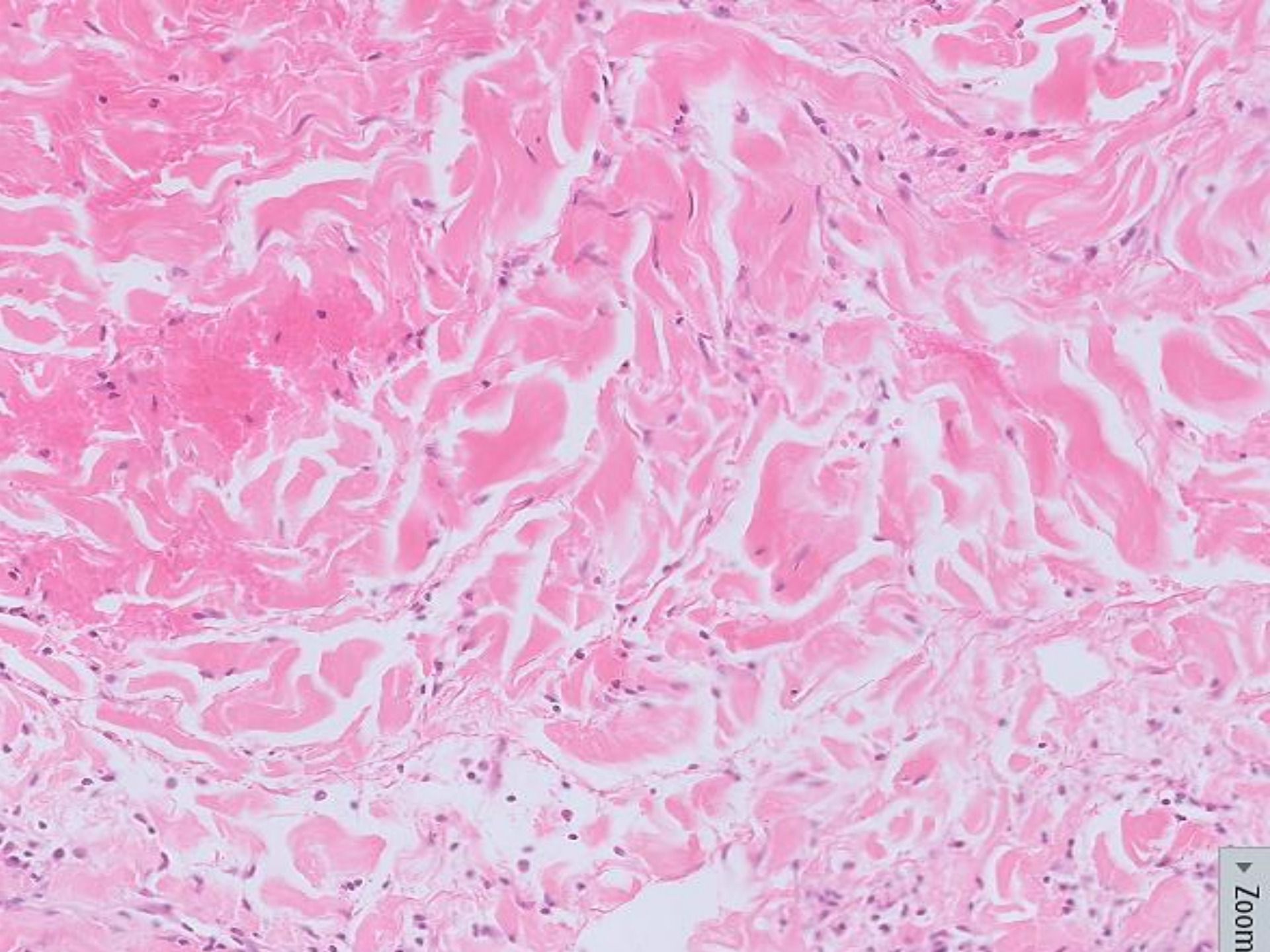
Su LD<sup>1</sup>, Kim YH, LeBoit PE, Swetter SM, Kohler S.













# Further work

- No loss of pan T cell antigens (CD2, CD3 and CD5)
- Normal dominance of CD4 over CD8
- TCPPCR negative
- CPC: discussed at Inflammatory MDT

FINAL DIAGNOSIS: Inflammatory Morphoea

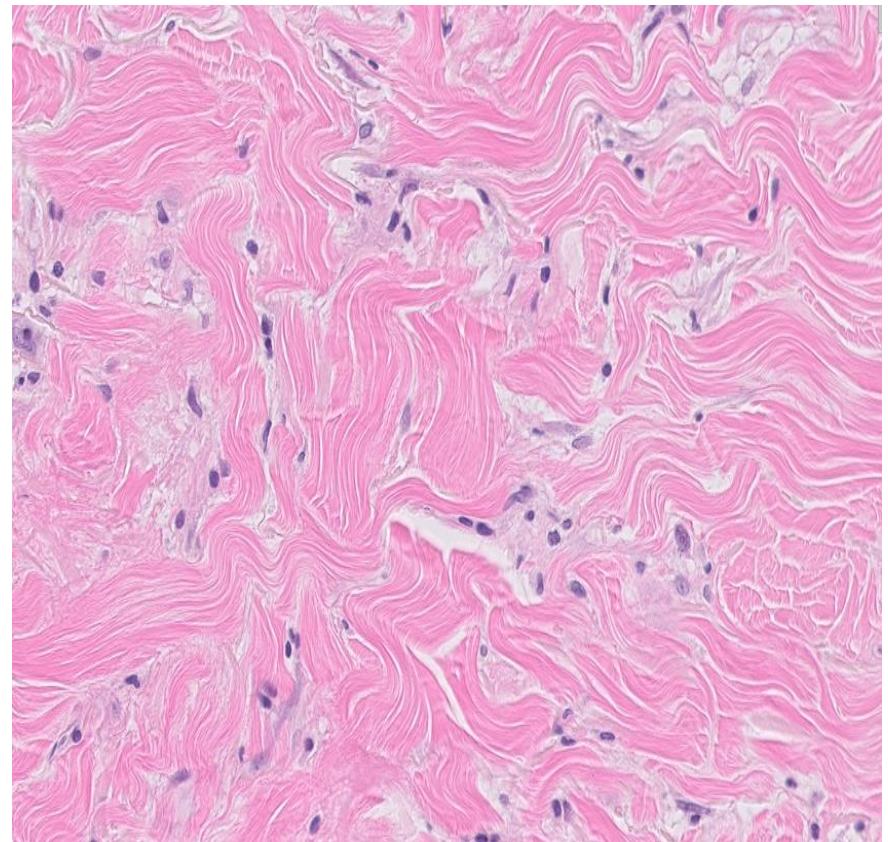
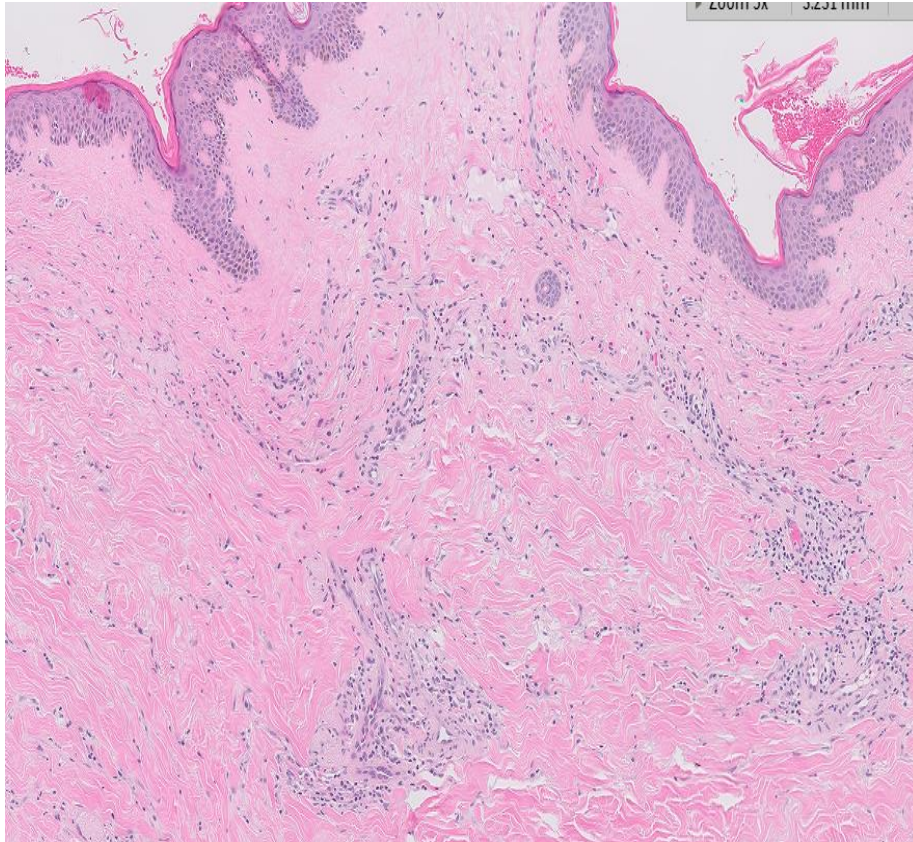


# Diagnosis

Inflammatory Morphoea



# Late stage of inflammatory Morphea



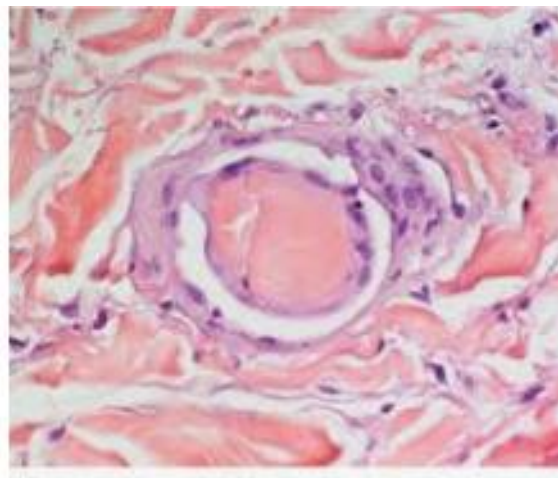


# Late stage of Inflammatory Morphea

[Am J Dermatopathol.](#) 2014 Jun;36(6):500-5.

**Morphea and its variants and the "floating sign"-an additional finding in morphea.**

[Perez-Chua TA<sup>1</sup>](#), [Kisel YG](#), [Chang KH](#), [Bhawan J](#).





# Acknowledgements

- Dermpath team at LCL (Nitin, Magda, Iskander, Yasmeen)
- Dermatopathology colleagues in Merseyside and Chester
- Dermatologists at Broadgreen Hospital

Thank You